

A stylized sun with yellow rays and the text "The Best Fire" in the center. The sun is composed of a central yellow circle with several yellow rays extending outwards. The text "The Best Fire" is written in a bold, black, sans-serif font across the middle of the sun.

The Best Fire

The Best Fire is the Fire that Never Happens

- Ceferino “Reno” Lamb
- Volunteer Fireman, retired 2025
 - Sheriff Search & Rescue 2002
 - First Responder trained 2002
 - Bird Oxygen machines – 1973
 - Ambulance Dispatcher – 1972!

No 911, no EMS ...

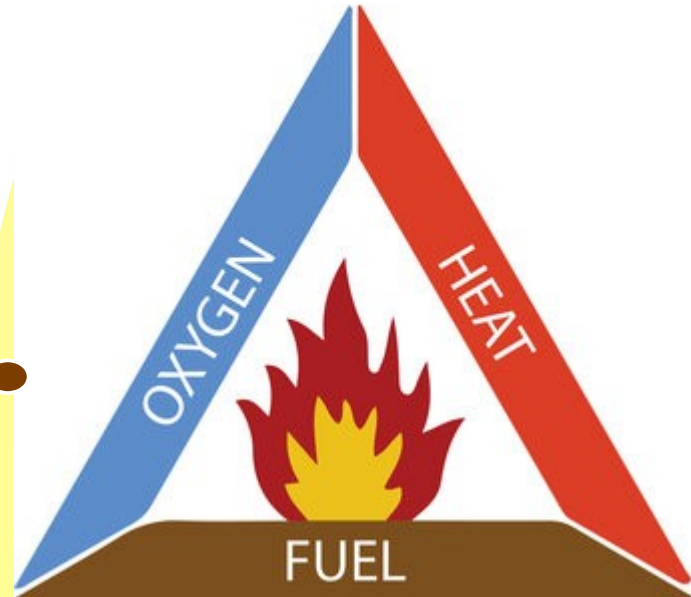
What is fire? New

- How fires reach your home
- How homes catch on fire
- What brings fire to your home?
- Who is the best fireman for YOU?
- So, what can YOU do?
- Which plants do fires like?
- Which plants don't fires like?
- Resources

- Propagation is how fires grow and travel
- Wind, heat, direct contact
- Required elements

Remove
any of
these three
and I die

Fire Triangle

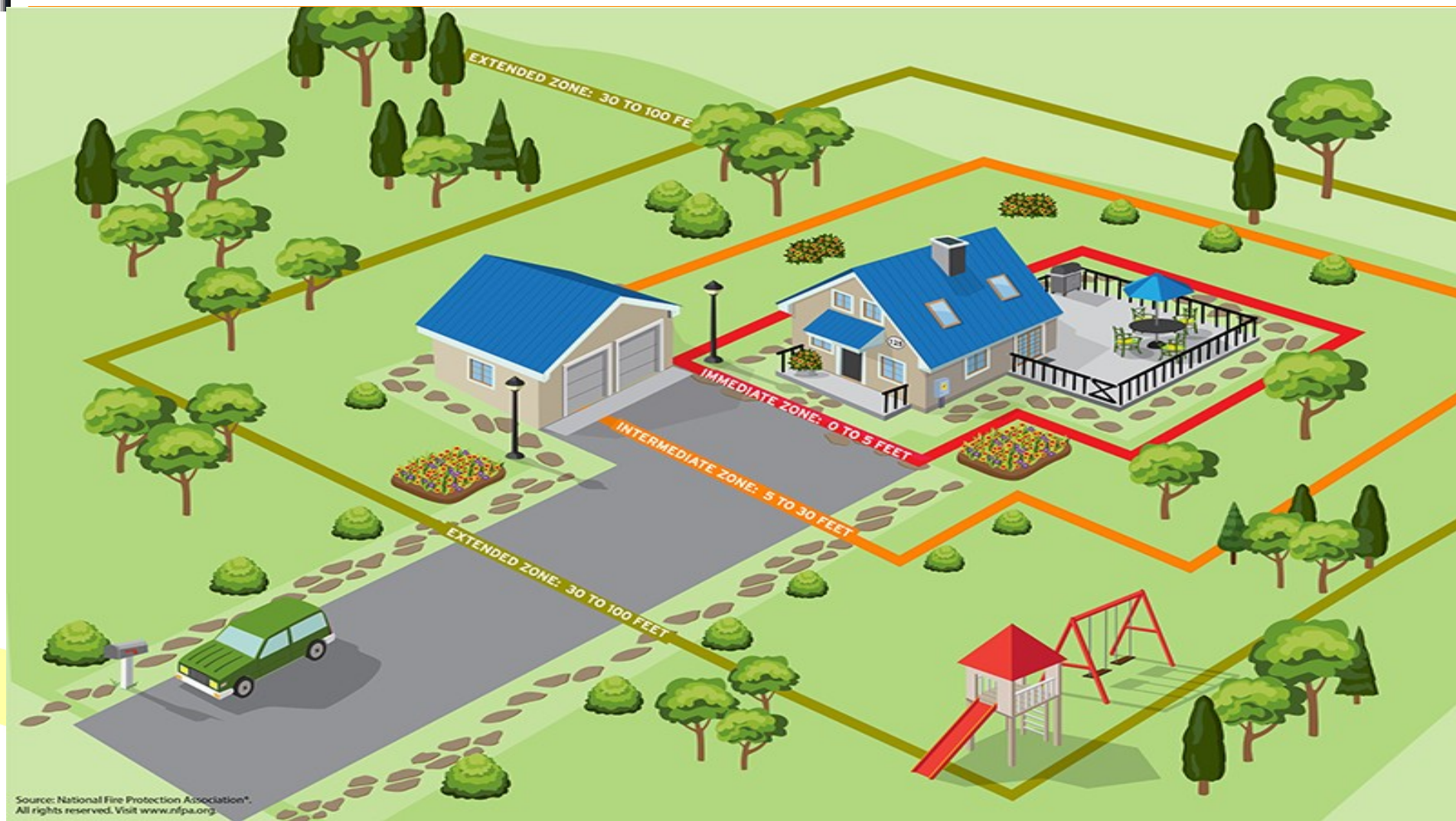


What is fire? New

- How fires reach your home
- How homes catch on fire
- What brings fire to your home?
- Who is the best fireman for YOU?
- So, what can YOU do?
- Which plants do fires like?
- Which plants don't fires like?
- Resources

- Heat gets too close to your home
- Home is of flammable material
- Flammable plants too close
- Other flammables too close
- Insufficient defensible space







What is fire? New

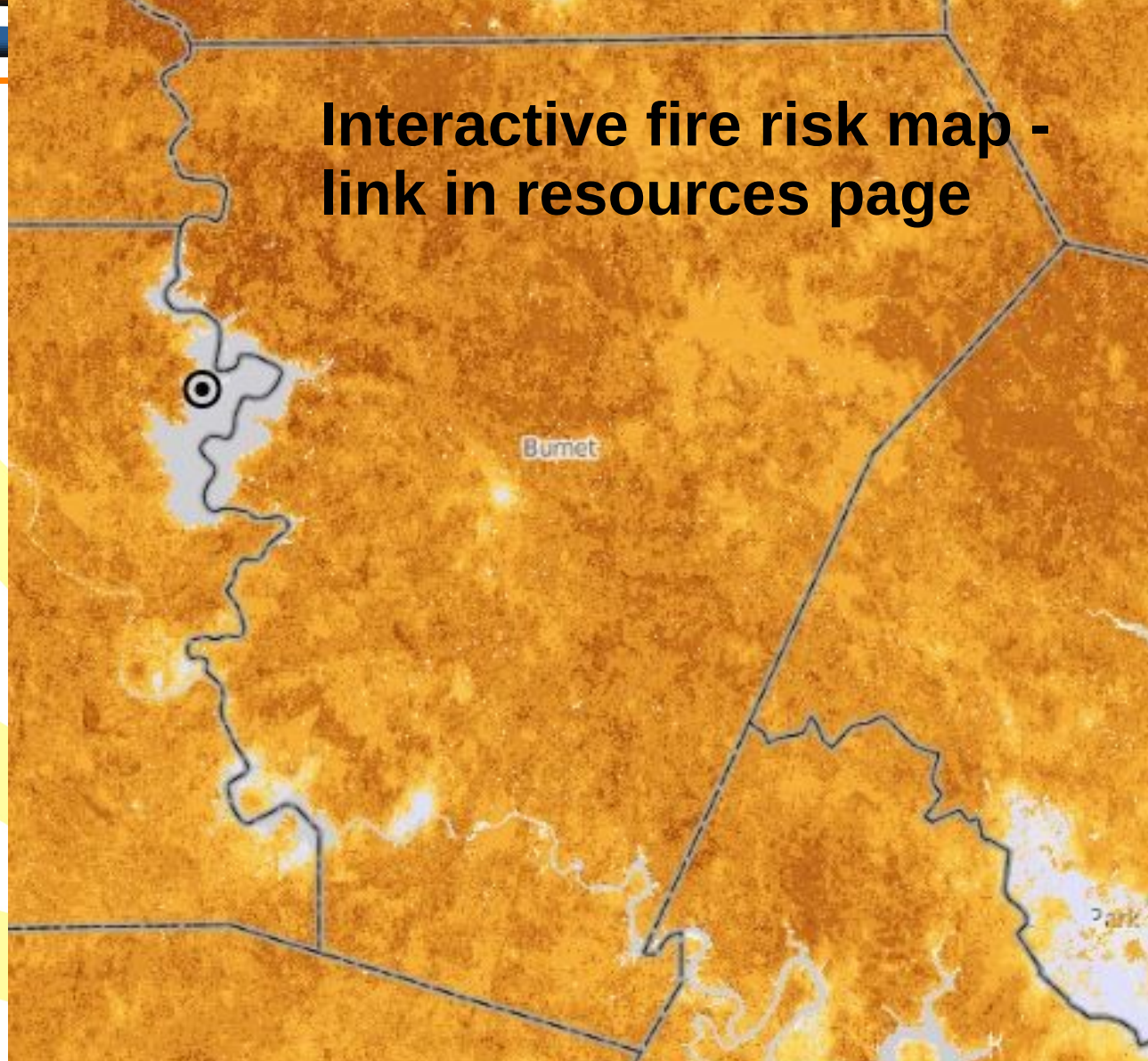
- How fires reach your home
- How homes catch on fire
- What brings fire to your home?
- Who is the best fireman for YOU?
- So, what can YOU do?
- Which plants do fires like?
- Which plants don't fires like?
- Resources

- Location, location, location, and suburban interface





**Interactive fire risk map -
link in resources page**

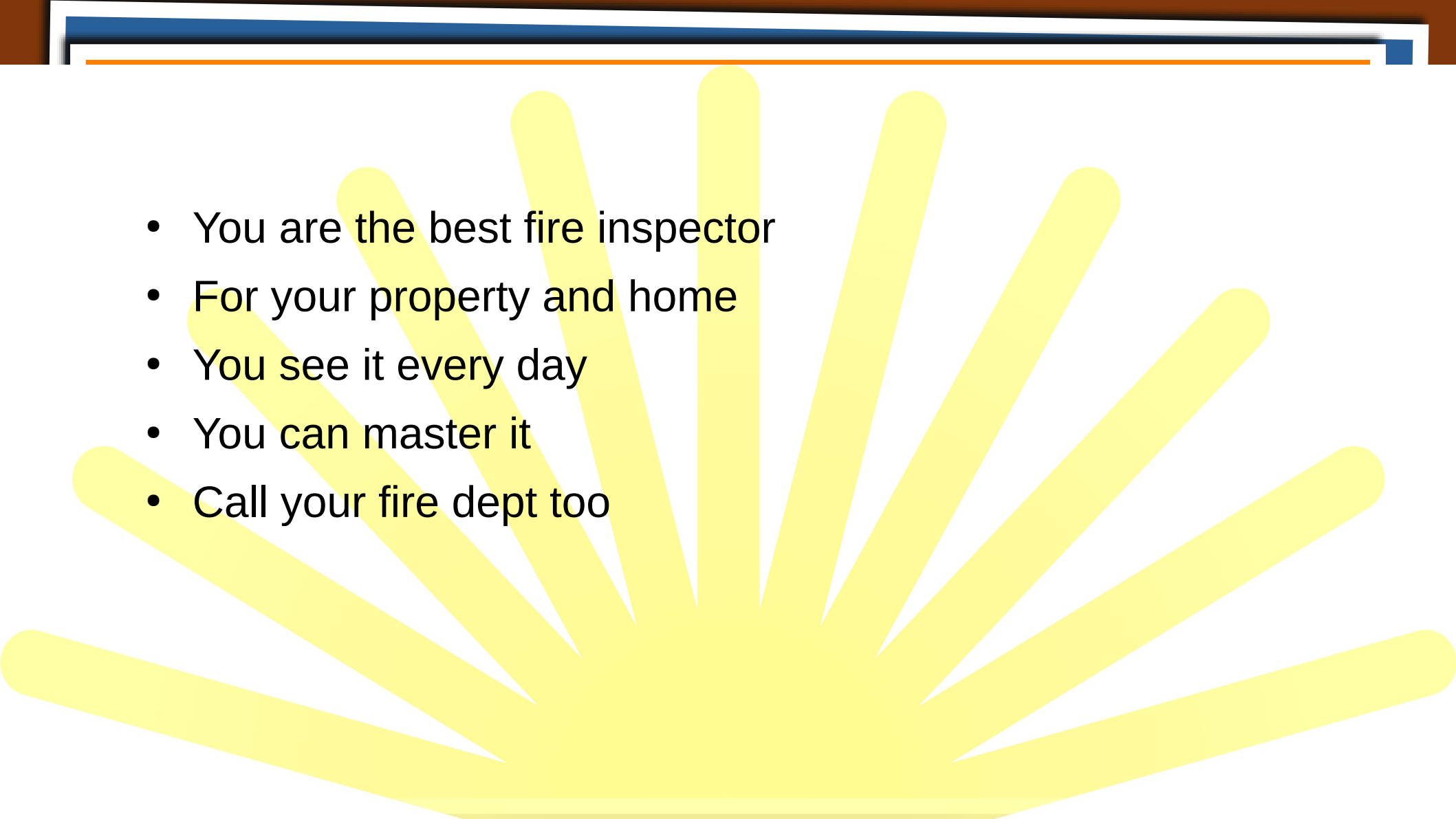


What is fire? New

- How fires reach your home
- How homes catch on fire
- What brings fire to your home?
- Who is the best fireman for YOU?
- So, what can YOU do?
- Which plants do fires like?
- Which plants don't fires like?
- Resources

- The best fire is one that never happens
- The best fireman doesn't need to come
- What fireman doesn't come to a fire??



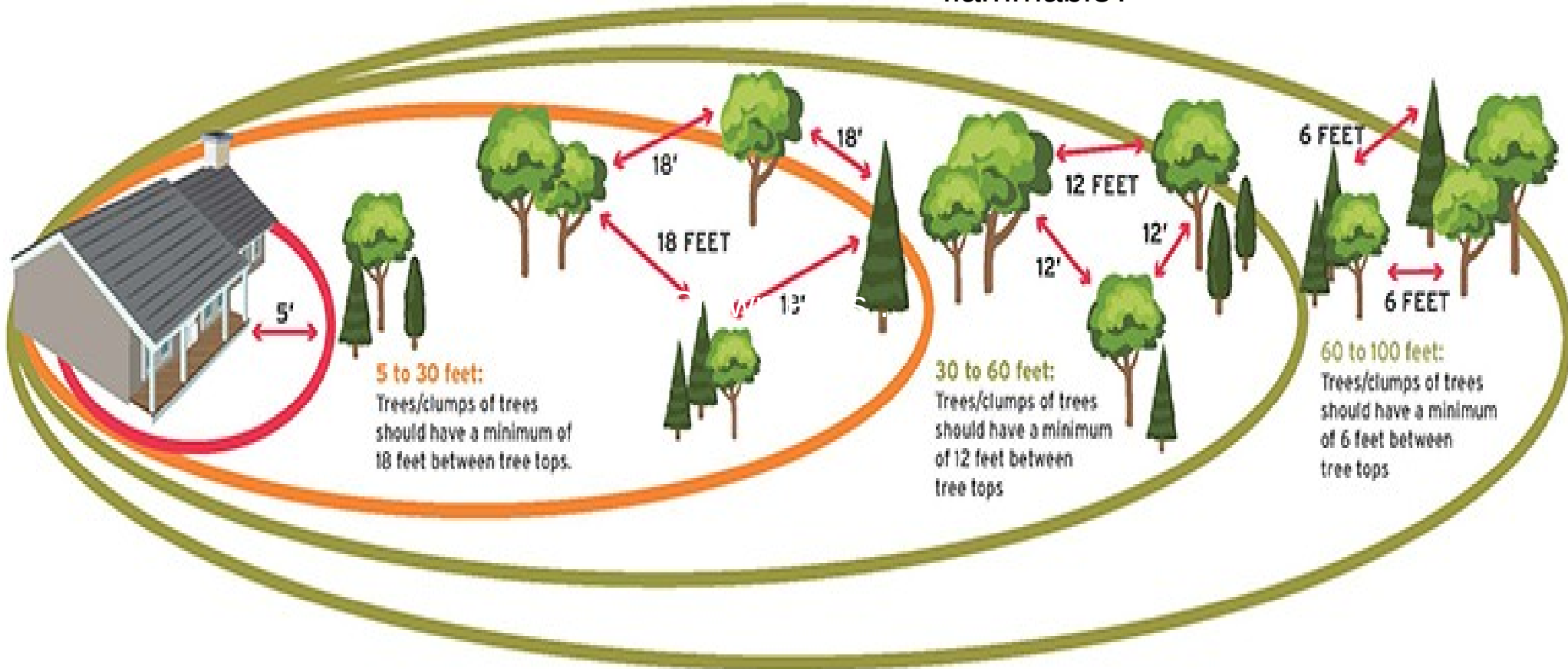
- 
- You are the best fire inspector
 - For your property and home
 - You see it every day
 - You can master it
 - Call your fire dept too

What is fire? New

- How fires reach your home
- How homes catch on fire
- What brings fire to your home?
- Who is the best fireman for YOU?
- So, what can YOU do?
- Which plants do fires like?
- Which plants don't fires like?
- Resources

TREE SPACING

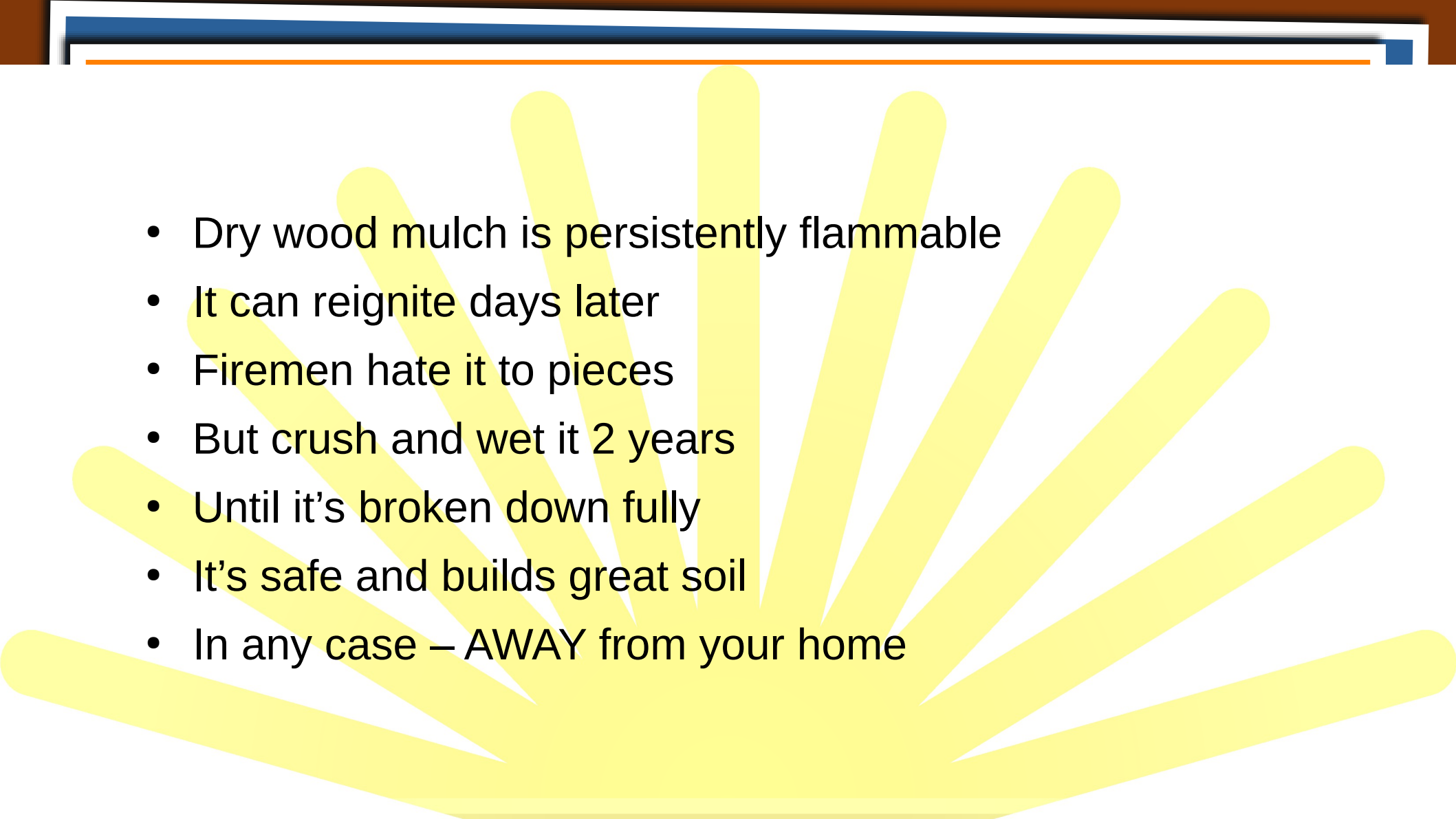
Go on a walkabout. How close are the crowns of your trees? Are they flammable?



caution



what kind of **MULCH** are you?

- 
- Dry wood mulch is persistently flammable
 - It can reignite days later
 - Firemen hate it to pieces
 - But crush and wet it 2 years
 - Until it's broken down fully
 - It's safe and builds great soil
 - In any case – *AWAY* from your home

What is fire? New

- How fires reach your home
- How homes catch on fire
- What brings fire to your home?
- Who is the best fireman for YOU?
- So, what can YOU do?
- Which plants burn easily?
- Which plants don't?
- Resources

'C' or 'rth' - AW

High Flammability (high oils/resins/dry habit) These burn hot/fast; restrict to outer zones, 30+ ft

- Eastern Red Cedar / Ashe Juniper (*Juniperus virginiana* / *ashei*) – Very high (volatile oils, dense growth, crown fires)
- Pampas Grass / Other tall ornamental grasses (e.g., *Miscanthus*) – Dry out quickly, ignite easily
- Rosemary (*Rosmarinus officinalis*) – High oils, burns like tinder
- Pine species (loblolly) – Resin-heavy needle
- Some junipers (creeping varieties) – Extremely flammable oils

Moderate Flammability (but prune, space, irrigate) These are common but need maintenance (remove dead material)

- Blackfoot Daisy (*Melampodium leucanthum*) – Native, daisy-like, fairly resistant but can dry out
- Texas Redbud (*Cercis canadensis* var. *texensis*) – Native tree, deciduous (less fuel when dormant)
- Bigtooth Maple (*Acer grandidentatum*) – Deciduous, higher moisture
- Beautyberry (*Callicarpa americana*) – Native shrub, moist berries/leaves

What is fire? New

- How fires reach your home
- How homes catch on fire
- What brings fire to your home?
- Who is the best fireman for YOU?
- So, what can YOU do?
- Which plants like to burn?
- Which plants don't burn?
- Resources

e-fundamentals

- **Turk's Cap** (*Malvaviscus arboreus* var. *drummondii*) – Native, moist stems/leaves, low oil content, attracts pollinators.
- **Autumn Sage / Cherry Sage** (*Salvia greggii*) – Native, high moisture, compact growth
- **Texas Sage / Cenizo** (*Leucophyllum frutescens*) – Native, silvery leaves retain moisture, low flammability when irrigated.
- **Red Yucca** (*Hesperaloe parviflora*) – Succulent-like, high moisture, minimal fuel.
- **Horseherb / Straggler Daisy** (*Calyptocarpus vialis*) – Low-growing groundcover, moist, spreads well.

Fire p

- **Woolly Stemodia** (*Stemodia lanata*) – Native groundcover, fuzzy/moist leaves
- **Texas Bluebells** (*Eustoma exaltatum*) – High moisture content, slower to ignite
- **Lantana** (Texas Star!) – Drought-tolerant, but moist when watered
- **Yaupon Holly** (*Ilex vomitoria*) – Native evergreen shrub/tree, moderate moisture, less flammable than junipers. Has caffeine in its leaves for tea
- **Live Oak** (*Quercus virginiana*) – Native tree, thick bark, broad leaves, low litter if pruned

What is fire? New

- How fires reach your home
- How homes catch on fire
- What brings fire to your home?
- Who is the best fireman for YOU?
- So, what can YOU do?
- Which plants do fires like?
- Which plants don't fires like?
- Resources

Resources

- Texas A&M AgriLife Extension
- Travis County Firewise
- Sun City Texas Firewise Guide
- Austin Firewise

HOME

ASSESS YOUR LOCATION

MAP THEMES

RESOURCES

Enter address, place, or coordinates

Assess Your Location

Pan the map to identify the wildfire exposure score associated within the general vicinity of your location. This score represents the chance of a wildfire occurring and potential damage to a structure, if present. Switch over to the "map theme" tab to see more layers.

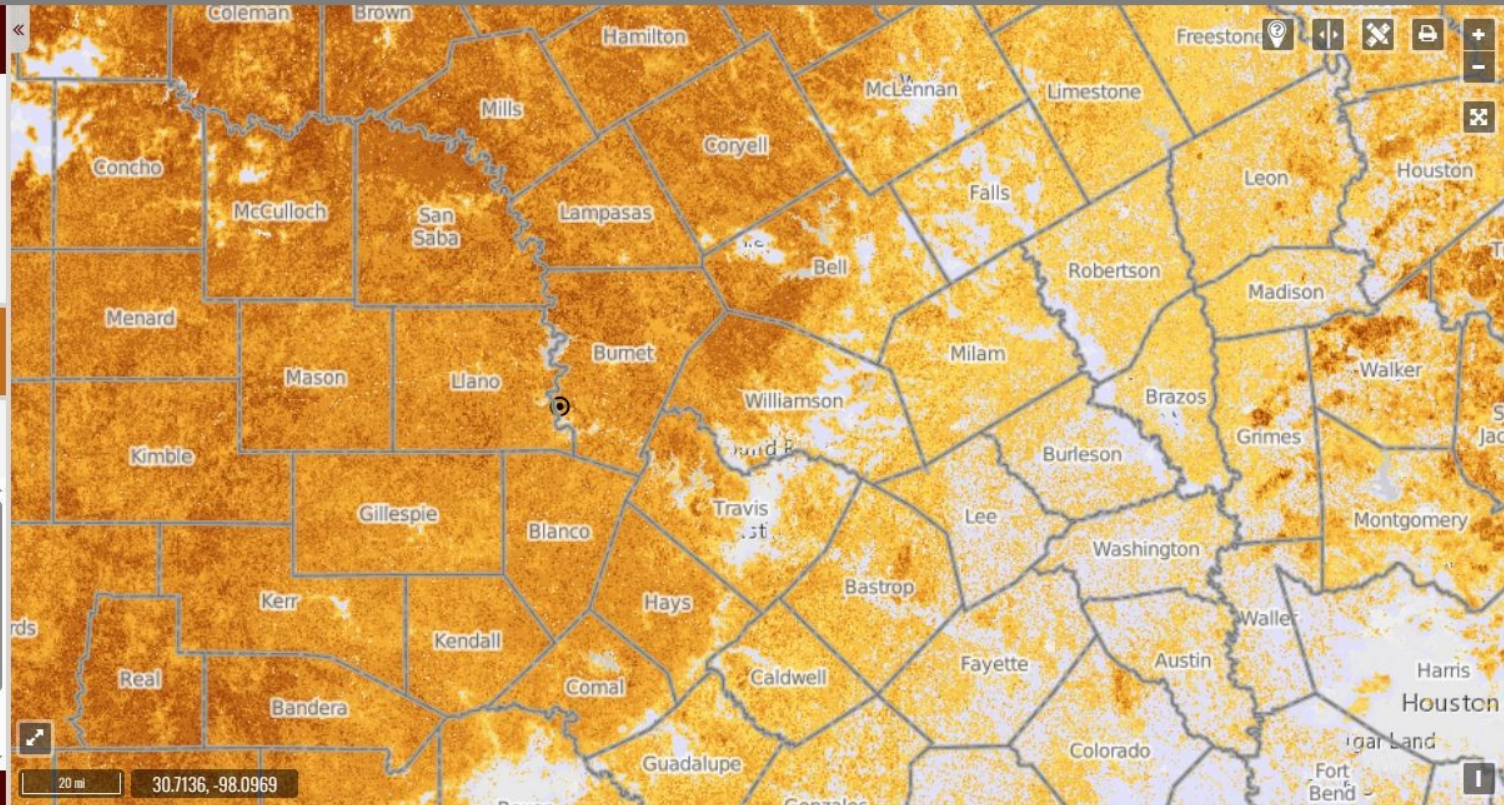
7/10 - High

30.62968° N 98.39615° W

Take action towards implementing wildfire mitigation strategies to better protect your home and property.

As a homeowner, you are not powerless in your defense against wildfires. By taking a proactive approach to wildfire prevention, you can significantly increase your safety and your home's likelihood of survival during a catastrophic wildfire event. The

[Learn more about reducing your risk](#)



Interactive map of fire risk by area
wrap.texaswildfirerisk.com/Map/Public/#whats-your-risk

10 Resources

- **Preparing Homes for Wildfire**
 - [nfpa.org/education-and-research/wildfire/preparing-homes-for-wildfire](https://www.nfpa.org/education-and-research/wildfire/preparing-homes-for-wildfire)
- **A&M Forest Service**
 - tfsweb.tamu.edu/wildfire-and-other-disasters/burn-bans-and-information/wildfire-risk
- **Cal Fire – Cali and TX are much alike regarding fires!**
 - [fire.ca.gov](https://www.fire.ca.gov)

- Call your local ESD fire dept
- Or try their website
- Bertram Volunteer Fire Dept, example
- We have a Fire Marshall
- And a Fire Inspector



st is Fir
ev lap ns

Ceferino "Reno" Lamb

Any Questions?